

**OUR PEMF TECHNOLOGIES HAVE BEEN
SUCCESSFULLY USED ON HUMANS, EQUINES,
BOVINES, PETS AND EXOTIC ANIMALS SINCE 2007.**



Proven, powerful, safe and easy to use, our PEMF Technologies are a perfect fit for any Sports Medicine, Chiropractic, Regenerative Medical Professionals, Veterinarians, Farriers and Equine Care Specialists.

What's Inside

Page 2 Customer Support	Page 12 Equine Thermology
Page 4 Devices, Prices and Specs	Page 14 Electrical Certifications
Page 6 Super Pulsed PEMF	Page 15 Testimonials
Page 10 Accessories - Warranties	Page 16 Industry Associations

Magnus Magnetica, LLC
Direct: (323) 680-5411
1555 East New Circle Road Suite 142-214 Lexington, Ky 40509
© 2022 Magnus Magnetica, LLC - All Rights Reserved



Henry Siegel
CEO/Founder

PEMF [Pulsed Electro-Magnetic Field] Therapy is already registered by the FDA to promote the healing of bone fractures and is in the process of being approved for many other uses, from migraines to depression, to sports injuries.

In both the human and animal markets, our PEMF devices are currently used worldwide by athletes and non-athletes alike, treating injury and disease, with remarkable results.

These products are designed to help all manner of healthcare professionals treat their patients more effectively, and getting these patients back to their normal activities faster. This is why we're in business - to provide quality products for patients and animals to return to their quality of life.

Do you have any questions about our product offerings? Feel free to send us an email or give us a call. We are waiting to hear from you. We serve all 50 states and deliver internationally.

Our Mission and Vision:

Magnus Magnetica is committed to continuous research, development and commercialization of drug free, non-invasive Pulsed Electro-Magnetic Field therapies for treatment of soft tissue indications, range of motion issues and neurological disorders. We pledge to collaborate with medical, veterinarian, clinical and athletic communities, with the mission of improving care for the many patients and animals suffering from these disorders.

Since 2007 Magnus Magnetica has been working with PEMF Technology as a family owned and operated business.

Our promise to current and future customers:

1. Your Support Needs:

- To continually make ourselves available for any and all questions or considerations related to device operations, service, support and education.
- To provide you access to the company owner about any and all concerns you may have so decisions and directives can be made quickly.

2. Your Training Needs:

- To refer you to Technicians in our Network who will provide a basic demonstration and use of our technology when you are simply seeking out more information.
- To match you with the most appropriate Technician, Licensed Equine Vet or Rehabilitation Center for your Hands on Training.
- To provide clinics and educational conferences through the American Association of Equine Therapists and Technicians, a 503 c6 non-profit that is not brand or equipment biased.

3. Your Sales Inquiry:

- To be your guide through a sales inquiry, based upon what your needs are, not what devices we need to sell or which one's are the most profitable.
- To call, text or email you back within 24 hours of your inquiry, whether you are a prospective customer or a customer that's been with us a decade.

4. Device Fabrication and Engineering Integrity:

- To sell PEMF Devices that have received Electrical Safety Certifications and manufactured only in an ISO 13485 Factory.

5. Warranty, Service, Repairs and Loaners:

- To provide a clear and concise process to submit a PEMF device for repairs under or out of warranty directly on our website.
- Issues with your PEMF device? When you are busy you need a loaner. We offer device loaners at no cost in the 1st six months of ownership, then a small daily fee based upon age of the device, after the 6th month.

When Purchasing a High Powered PEMF:

Buyers are justifiably concerned that certain high powered solid state PEMF devices have adequate power and will naturally seek out a device with the higher Gauss output. In some cases this is a moot point because there are zero studies evidencing that a higher power, slower pulse per second field is going to be any more effective than "less gauss". Review this chart:

A higher gauss (16,000) at a slower 1 pulse per second delivers 9,600,000 overall gauss during a 10 minute session.

Gauss Output	Pulses per second	Gauss penetrating targeted body part per second	Gauss penetrating targeted body part per minute	Cumulative Gauss penetrating targeted body part per 10 minute session
20,000	0.75	15,000	900,000	9,000,000
16,000	1.00	16,000	960,000	9,600,000 ★
10000	2.00	20,000	1,200,000	12,000,000
7500	3.00	22,500	1,350,000	13,500,000 ★
5000	4.00	20,000	1,200,000	12,000,000

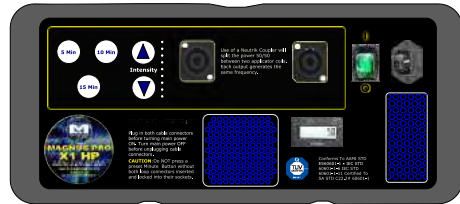
Note: The increased Gauss penetrates deeper...however, there is zero clinical evidence that the marginal increase in depth of penetration yields greater efficacy.

Importantly, increased Cumulative PEMF energy penetrates the targeted area, during a 10 minute session, when a 7,500 Gauss output at 3 pulses per second is utilized (13,500,000 Cumulative Gauss). Cumulative Gauss is a significant consideration for all application and prescriptive protocols.

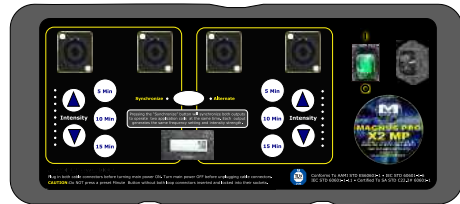
Single/Dual Output PEMF Devices



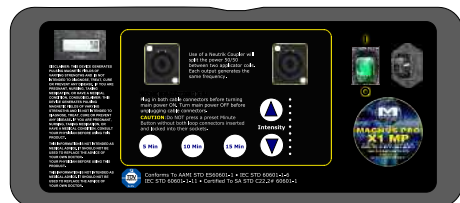
Magnus Pro X2 HP - \$23,950
Finance at \$495 per month*



Magnus Pro X1 HP - \$21,000
Finance at \$430 per month*



Magnus Pro X2 MP - \$14,500
Finance at \$300 per month*



Magnus Pro X1 MP - \$7,995
Finance at \$170 per month*

— New control boards to be released Mid -2022 —

Basic Specifications



New for 2022

Spark Gap Chamber devices are back at an affordable price. This 11.5 Lb package is the only Spark Gap Chamber device on the market with an Electrical Safety Certification.

Magnus Pro X1 MP SG - \$7,495
Finance at \$160 per month*

Model	Magnus Pro X2 HP	Magnus Pro X1 HP	Magnus Pro X2 MP	Magnus Pro X1 MP
Frequency & Intensity Settings	Variable Setting 1-9	Variable Setting 1-9	Variable Setting 1-5	Variable Setting 1-9
Gauss Output	Go to : www.magnusmagnetica.com/specs			
Weight	18 lbs	14.5 lbs	9.8 lbs	7.5 lbs
Dimensions inches	18 W x 15 D x 7.25 H	16.40 W x 8.71 D x 13.15 H	16.40 W x 8.71 D x 13.15 H	16.40 W x 8.71 D x 13.15 H

- ↻ 5, 10 & 15 minute pre-set timers (coming in mid-2022)
- ↻ Electrical safety tested and certified (see page 12).
- ↻ Solid state construction.
- ↻ Maintenance free (Buyer just keeps each device dust/dirt free).
- ↻ 110 Volt / 220 Volt auto sensing for U.S. and foreign use.
- ↻ FEI Compliant (Equine Industry).
- ↻ A separate carrying case is provided for all loops and accessories.
- ↻ See page 10 and 11 for standard loops included, additional accessory options and pricing.
- ↻ Training and full business and marketing support is included as long as the original buyer holds title.
- ↻ Stall wall brackets are included so the device can be placed off the floor at chest height for safe application, when used on large animals.
- ↻ Automatic Pressure Equalization Valve - balances interior pressure, keeps water out
- ↻ Easy open Double Throw latches

**Includes basic set of loops only. Monthly payments based upon applicant's credit score being greater than 700, minimum 2 years of verifiable business operations and financed over a 5 year term.*

Super Pulsed PEMF

PEMF treatment stimulates many aspects of cellular metabolism and activity by increasing the TMP and flow of ions across the cell membrane, growth factors, tissue repair and healing. PEMF therapy increases blood circulation in and around damaged tissue, and effectively helps damaged cells heal by bringing more oxygen into the cells.

The PEMF is applied by selecting an appropriate accessory to target a specific body part of the horse. PEMF Therapy is non-static, unlike therapy with standard magnets, which are constant or static. To create a PEMF, an electrical current is introduced into a looped wire thereby creating a magnetic field. The electrical current is then activated and then deactivated in cycles between one time per second to thousands of times per second. The cycles and frequencies are dependant upon the design of any particular PEMF device.



Intelligent Technology

Choice of PEMF gauss and frequencies allow for correct tissue penetration from the smallest to largest humans or animals.

Better Outcomes

High-Powered PEMF out-performs lower powered PEMF mats or blanketing systems through targeted, deep penetration.



An Evolution in Equine Podiatry and Hoof Care

Treat from under the hoof with the Hoof Pro[®] accessory for navicular, abscesses and laminitis.



Results that speak for themselves



Reduction in Pain

Acute and chronic pain can be quickly addressed with no side effect, incisions or drugs for use on all warm blooded mammals.

Evolve your Enterprise

Rental Devices will accelerate healing at home, leading to satisfied owners and happier patients.



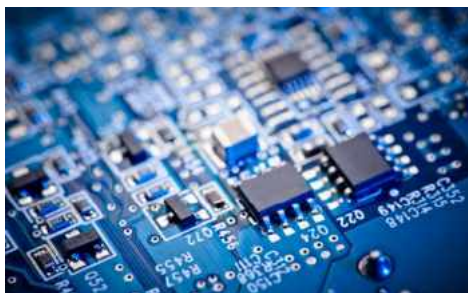
Accelerates Rehabilitation

Easy to follow application protocols will quickly send humans, horses and small animals back to their regular activities.

Intelligent Technology Intelligent Choice

How PEMF Technology works

Magnus Magnetica's proprietary solid state PEMF devices are essentially computerized PEMF devices.



Our array of PEMF technologies is capable of generating time variable, frequency variable and intensity variable PEMFs and no longer rely on outdated Spark Gap Chamber technologies. A unique property to all our devices is a 'clicking noise' generated in the loops sets. This noise is the result of a high powered magnetic field causing the copper wires, encased within the latex loop, to synchronously vibrate with each magnetic pulse.



The pulsed electrical energy that is sent through the loop is created by proprietary power transformers, capacitors, transistors etc. With exception of a cooling fan in high powered models, there are no moving parts in these devices.

All the versions/models of our PEMF devices are capable of generating adjustable arrays of frequencies and intensities that can generate an accelerated therapeutic effect for people, horses and small animals.



Approved (FDA) uses for PEMF

- Chronic non-malignant pain relief
- Post-operative pain and edema
- Bone growth/regeneration:
 - faster healing of delayed non-union fractures
 - clients with diabetes and vascular issues
- Depression – if anti-depressants ineffective
- Adjunct to cervical fusion surgery
- Brain cancer 2011
- Enhanced tissue repair (NASA) 2009
- Stimulate growth stem cells (NASA adjunct)

It is no surprise that the Medical and Research communities have embraced PEMF technology, performing thousands of university double blind studies on its application regarding a myriad of medical issues. The US FDA accepted the use of PEMF devices in the healing of non-union bone fractures in 1979, urinary

incontinence and muscle stimulation in 1998, and depression and anxiety in 2006. Applications for wound healing and cancer treatments have been approved in the last decade.

Whole body treatments have been successfully delivered to many of the world's top performance humans and equine in competitive environments. Many times athletes will compete three times within a 3 to 5 day time frame. Providing whole body treatments can assist the athlete to perform at their best.



Treating the whole body can have beneficial effects of reducing overall body soreness and reducing inflammation.

Re-energizing the athlete is always a big plus.



Accessories

Loop Sets, Mag Discs, Wings, Paddles and Mag Pads	Accessory Image (All shown with a variety of Connectors)	Standard Loops Included and Additional Accessories	Price
<p>Large Loop (Human or Equine) Included with all PEMF devices</p>		Packaged with all devices selected at no additional cost 6 ft (Human) or 12 Ft lead (Equine)	<p>Replacement Cost Human - \$500.00 Equine - \$550.00</p>
<p>Joint Loop (Human or Equine) Included with all PEMF devices</p>			<p>Replacement Cost Human - \$650.00 Equine - \$700.00</p>
<p>Mag Disc (Includes a protective pouch for animal use)</p>		Additional Accessory 6 inch lead Extension cables available	<p>\$750.00</p>
<p>3 Hoof Pro Bindings</p>		Additional Accessory Delivered in 3 different sized bindings to accommodate most horses	<p>\$500.00</p>
<p>24" Equine Wings</p>		Additional Accessory Includes a 24" Carrying Case	<p>\$1250.00</p>
<p>18" Equine Wings</p>		Additional Accessory Includes a 24" Carrying Case	<p>\$1150.00</p>
<p>Mag Mat 18" x 23" or 12" x 22"</p>		Additional Accessory 6 ft or 12 Ft lead Includes a Mag Mat Carrying Case	<p>\$1250.00</p>
<p>Mag Paddle 8" in diameter with Leatherette cover</p>		Additional Accessory 6 ft or 12 Ft lead	<p>\$925.00</p>

Included with all EquiPulse Purchases

Poll Strap, Mag Disc Pouch and Strapping System



Carry cases for Loops and Accessories



Portable Anti-Gravity treatment chair



Our 3 Year Factory Warranty and Extended Limited Warranty Programs

Our PEMF devices are warranted by PEMF Systems, Inc, our manufacturer, to operate properly for a period of three (3) years from the date of the original purchase invoice. When specifically designated on an invoice, Magnus Magnetica will include an Extended Limited Warranty. In addition to the 3 year Factory Warranty an Extended Limited Warranty is handled as a maximum out of pocket expense of \$750.00 in any given year for maintenance or repairs. This means any repairs, after the original 3 Year Factory Warranty period expires, will never cost more than \$750.00, in any given year.

A Competitive Analysis

	Technology Leader				Innovation Leader			Education/Industry Leader			Service/Support Leader	
	Cordless and Rechargeable Technology	110V/220V Autoensing	Electrical Safety Certifications	Product liability provided by manufacturer	Proprietary Mag Disc non-pressurized tier	Proprietary Hoof Pro Kit	Under 15 lbs. & Wall Mount Capable	Training provided through AAETT*	Continuous history of exhibiting at AAEP & the IHCB	FEI Compliant	99% Uptime Guarantee **	Loansers available at no charge **
EquiPulse PEMF	Yes	Yes	Yes	Yes	Yes	Yes	Yes	Yes	Yes	Yes	Yes	Yes
Pulse Centers	No	No	No	No	No	No	No	No	No	No	No	No
Magna Wave	No	No	No	No	No	No	No	No	No	No	No	No
PEMF Solutions	No	No	No	No	No	No	No	No	No	No	No	No
PEMF Complete	No	Yes	Yes	Yes	No	No	No	No	No	Yes	No	No
Pulsed Energy Tech	No	No	No	No	No	No	No	No	No	No	No	No
E Pulse Magnetica	No	No	No	No	No	No	No	No	No	No	No	No
PEMF 8000	No	No	No	No	No	No	No	No	No	No	No	No

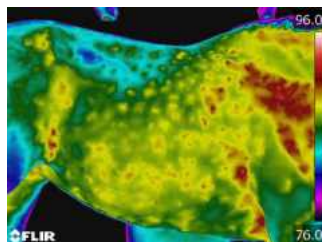
* AAETT - The American Association of Equine Therapists and Technicians, a 503 C6 non-profit that is not brand or technology biased.

** Certain conditions apply

Equine Thermology Certification

Devoted to serving the health needs of animals, Vetel Diagnostics and the Vetel Group of Companies announce their partnership with Magnus Magnetica LLC an internationally recognized provider of the EquiPulse® line of pulsed electro-magnetic therapy devices (PEMF).

Equine Veterinarians, PEMF Technicians, bodyworkers, masseurs, and all Equine Care Specialists now have the opportunity to acquire Flir Thermographic Technology, receive 14.5 hours of RACE Approved education and acquire an American Academy of Thermology Certification. Take this opportunity to increase your value to your clients, their horses and all related stakeholders.



This program offers appropriate training for Veterinarians and Equine PEMF Technicians wishing to further their employment and effectiveness with an optional American Academy of Thermology Equine Thermal Imaging Specialist (AAT-ETIS) Certification.

This program provide the opportunity to develop both core and advanced medical imaging skills and an advanced understanding of infrared thermal imaging (also known as Thermography) for the equine.

An American Academy of Thermology (AAT-ETIS) Member Certification validates the Equine Care Specialist's commitment to education and training in equine medical thermal imaging.



Successfully completing all of the components of an AAT Member Certification program means that the candidate has met the AAT Member Certification requirements and has demonstrated the minimum necessary skills for the clinical administration of medical infrared thermal imaging on

equines and has the knowledge base needed to articulate the pathophysiology under study.

Our online thermal imaging education is open to veterinarians, trainers, farriers, and private owners who wish to expand their education in the applications of veterinary thermography. This course encompasses proper techniques for clear and concise thermographic exams, reviews case studies, and uncovers assorted artifacts you may encounter during an exam. Upon successful completion of this course participants will have a working knowledge of proper patient positioning, the management of artifacts, the normal thermographic patient presentation, disease entities and applications where thermal imaging is best utilized, and integration with other diagnostic modalities.



The online course will allow the Candidate to understand and build a specific focus on the following areas:

1. Thermoregulation of the equine / Successful equine imaging
2. Factors that determine skin temperature / Inflammation / Physiology of blood flow
3. Clinical use / Mechanics by which the horse exchanges heat
4. Injuries in the equine during exercise, training and performance
5. What types of injuries to look for in horses doing different disciplines
6. Accidental injuries in different sports. The use of thermography as a monitoring tool for the equine
7. Exercise and the effects of exercise on physiology / Recovery and monitoring horses during rehabilitation / Pathophysiology
8. Correct scanning / Correct report procedures / Environmental factors / Physics of infrared / Applications of thermography in the equine / Thermal tuning
9. To study the principles and practice of equine and veterinary infrared thermography.
10. To understand the process and physics of infrared and heat relating to the thermography application.
11. Understand the environmental factors that can affect scanning results and practice to ensure correct protocols are adhered to at all times.
12. Understand how to scan systematically, standardized scanning techniques and other factors.
13. How to transfer scan images to the reporting software and manipulate the level and span to highlight areas of interest.
14. How to produce a report for your client and their respective veterinarian using comparative analysis and to critically articulate one's findings to ensure a professional, concise and accurate report based on standards and protocol.

Find out more by registering for our Pre-recorded Webinar featuring Dr. Turner at www.EquineThermology.com



Tracy A. Turner, DVM, MS,
Dipl.ACVS, Dipl.ACVSMR is renowned
for his use of thermal imaging in
equestrian diagnosis and treatment.



Born from the need to bring quality and value to veterinary diagnostics, Vetel maintains a perpetual drive to harness the digital world for the veterinarian and Equine Care Specialists.

ALERT:**PEMF Devices must have an Electrical Safety Certification!****Why Electrical Safety Certifications are critical:**

Professionals and End Users in both the human and animal medical/therapy markets inquire about the validity and purpose of Electrical Safety Testing and Certifications on therapeutic devices offered with the purchase of therapeutic devices.

Medical Grade Electrical Safety Certificates are required for all X-Ray machines, Ultrasound devices, surgical tools, defibrillators, drug pumps, insulin pumps, and glucose monitors. Electrical Safety Standards for the Pulsed Electro-Magnetic Field devices offer in any market and you may be buying or selling, are no different.

It is crucial that all stakeholders involved in the manufacture and use of RFI-prone (also called radio-frequency interference) medical devices to take all necessary steps to avoid serious RFI problems that may lead to safety hazards. PEMF devices are definitively RFI devices.

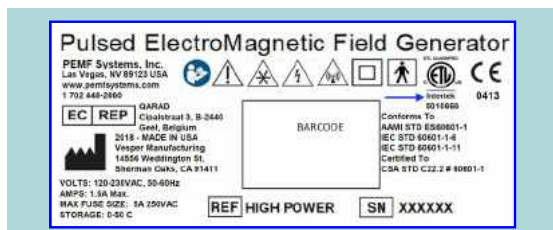
All PEMF device manufacturers are legally required, by the FDA, to design and test their products to ensure conformance with current RFI standards and educate users of their devices about the possible symptoms and safety concerns of potential RFI.

As the marketing, promotion and use of lasers, vibration plates and high powered PEMF devices flood the U.S. human and animal markets, all manufacturers must comply with the FDA, FCC and OSHA Regulations and go through the process of obtaining Electrical Safety Certifications through third party testing in accredited laboratories. All imported therapeutic devices, manufactured abroad certainly do so.

Distributors, resellers and the medical practices that purchase PEMF devices must assure all consumers that what they are buying and employing for treatments are safe and compliant with applicable regulatory standards and requirements.

High powered PEMF devices are used in a variety of medical and wellness environments, for both human and animal use, as well as for consumer home use. Ask your distributor or factory to show evidence that the devices you are buying (or reselling) have properly passed an Electrical Safety Test and have received Certification. A sample list of accredited laboratories are; Element, Intertek, TUV, United Labs, and Qai.

At the very least manufacturers and their distributors should provide links to the accredited labs where their PEMF devices have either passed or failed Electrical Safety Testing.



Actual CE markings are Certification Marks which indicate conformity with health, safety, and environmental protection standards for products sold within the European Economic Area (EEA). A CE marking is also found on products sold outside the EEA that are manufactured in, or designed to be sold in, the EEA. This makes the CE marking recognizable worldwide even to people who are not familiar with the European Economic Area. It is in that sense similar to the FCC Declaration of Conformity used on certain electronic devices sold in the United States. The CE marking is the manufacturer's declaration that the product meets the requirements of the applicable EC directives.

EquiPulse Testimonials



Implementing EquiPulse PEMF into my Farrier practice has afforded me the ability to truly make a difference in the welfare of the horses and their owners. EquiPulse PEMF has significantly improved outcomes for laminitis, navicular, abscesses and so much more.

Richard Armentrout, Apf 1, CJF



Magnus Magnetica's EquiPulse PEMF system has changed the way we manage the performance of our equine patients. It's the perfect compliment to our current treatment strategies, and even hastens resolution of secondary (compensatory) issues.

Bob Grisel, DVM - The Atlanta Equine Clinic



EquiPulse has given me more energy, freedom from pain and the comfort to work more efficiently. I cannot fathom not having this valuable machine in my farrier practice. This is a total game changer that is worth every penny.

Shannon Beth Cole , APF 1



My equine practice took off in a big way since adding EquiPulse. I utilize multiple procedures in the treatment of musculoskeletal and lameness issues in the equine athlete, and the addition of EquiPulse greatly enhanced the effects of all the other procedures to the point where I can say that am getting twice the results in half the time.

Dr. Michael Reuben, D.C., CVCP



The Magnus Pro X2 has greatly enhanced the business in multiple ways with both horse and owner. It has helped to allow many horses to move and work better in ways that I would not be able to accomplish with farrier work alone.

Dave Gregor

Equine Industry Associations and Educational Partners



American Association of Equine Therapists and Technicians



Our Financing
Partner Since 2008

Acquire your PEMF device, with no money down and no payments for six months. Receive as much as a \$5000 direct tax credit on your current year tax return. Please ask your accountant about IRS Rule 179.



Lexington, Kentucky
323.680.5411 • MagnusMagnetica.com

Canada

HEALTH CANADA
CLEARED

© 2021 Magnus Magnetica, LLC. All rights reserved. U.S. and International patents.
The Power to Heal, EquiPulse and Hoof Pro are registered Trademarks and property of Magnus Magnetica, LLC

Manufactured by
ISO13485
FACILITY