

# SKILL AND PRACTICALITY MEET FOR CONCAVE CHALLENGE

For this year's Summit Mail-In Forging Exercise, this concave shoe with clips and stud holes will test you with plenty of elements

By Craig Trnka, CJF

**A** frequent criticism of contest shoes is that they often lack practical use in everyday shoeing. Although I will argue that the lessons learned in making any shoe are transferable to your work, this criticism remains. With this in mind, I wanted to offer a shoe for this mail-in challenge that would have plenty of lessons, as well as practical use.

For the fifth annual Summit Mail-In Forging Exercise, sponsored by VICTORY, here is a concave shoe with clips and stud holes that has some tough steps, but will result in a functional shoe that can be nailed onto some sport horses.

## More On This Concave Shoe

This shoe will teach finesse while giving you a useful shoe. Look at these views of the finished shoes to the right. I like forging challenges that feature concave stock. First, I like it in this challenge because you aren't going to the drill press. If we didn't use concave in this exercise, you wouldn't have to stud punch — you could just drill

holes. With the stud punch, you have to create the collars. I used to hate using concave on shoes I had to drill and tap because I didn't want to put in the collars. But when I started punching, I found that this process is faster for me than going to the drill press.

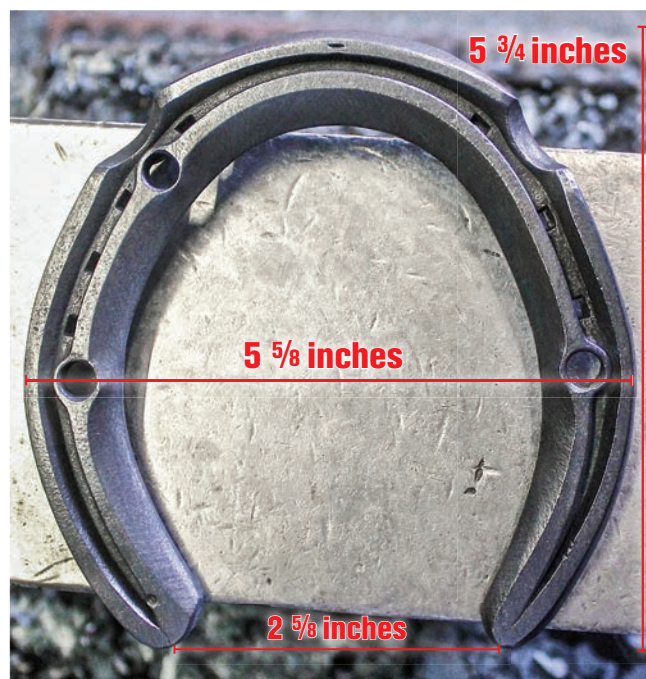
Shoes will challenge each of us differently, but I bet many of you will be challenged when you pull the lateral quarter clip. You have to be nice to concave, but you better be extra nice when you have a clip and stud hole at the same spot.

My son Bodie Trnka and I will judge these shoes at the Summit. If you attend, feel free to stop by our World Championship Blacksmiths booth at the trade show for a critique of your shoe. But you don't need to attend the Summit to enter this challenge.

You can watch a video of making this shoe at [AmericanFarriers.com/summitshoe](http://AmericanFarriers.com/summitshoe). You'll improve your skills and earn a free T-shirt from VICTORY just for entering. You may win the buckle. But remember, it isn't about winning — it is about the journey. Good luck! 🐾



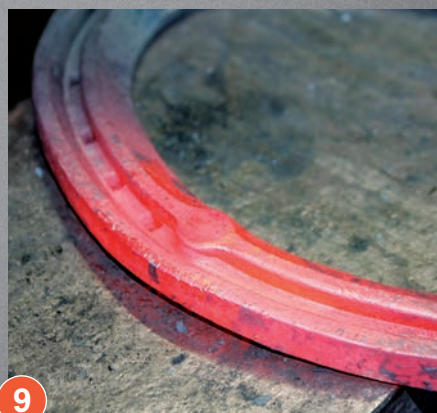
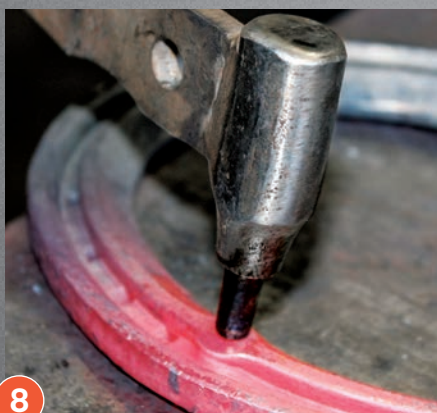
Craig Trnka is an International Horseshoeing Hall of Fame farrier based in Edgewood, N.M. He is an American Farrier's Association past president and the founder of the World Championship Blacksmiths.



Fit the shoe with an E4 nail hybrid

Sponsored by VICTORY, this forging exercise requires making this concave shoe. You have until Jan. 15, 2019, to mail your entry into the AFJ office. Read instructions on how to enter on Page 78.





## Step-By-Step

**1.** Start with 13 inches of  $\frac{3}{8}$ -inch by  $\frac{7}{8}$ -inch concave. Center punch  $\frac{1}{8}$ -inch to the medial side having a  $\frac{1}{4}$ -inch of more material on the lateral side.

**2.** Make toe bend with the toe nails  $1\frac{1}{2}$ -inch calipered off the center punch mark.

**3.** Forge the end of the heel without flattening. Make sure to overlap the crease so as to not have a fish mouth before flattening.

**4.** After the outside branch is made, punch four nail holes for hybrid E4 nail.

**5.** Make the medial heel the same way as the lateral heel and then run your hammer down the inside edge of the stock so as to thicken the concave edge.

**6.** Tilt the stock on the anvil so as to safe the inside edge and sweeten it a bit from the widest part back.

**7.** Three nail holes punched on the medial branch for a complete shoe.

**8.** To stud punch a nail hole on concave, you must use a  $\frac{5}{16}$ -inch stud punch and place the punch over the inside edge of the concave to create a collar on the ground.

**9.** Bottom out the punch so you have a clean, flat ring to center your punch on when you flip the shoe over.



**10.** Looking at this view from **Figure 8** again, take your time and center your punch to punch out your washer and make a clean collar for your threads.

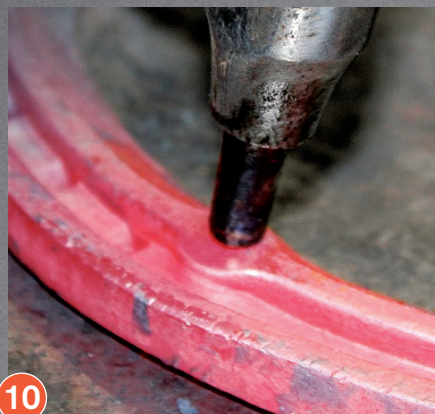
**11.** Making sure you center your punch on the inside web should give you enough material to make a clean collar.

**12.** You will punch a stud hole in both quarters medial and lateral, then a third stud hole in the lateral toe where the gap is made for the lateral clip.

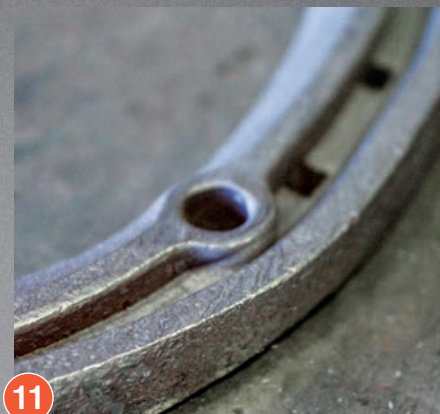
**13.** Using a cone hammer, focus on the outer edge of the concave

**14.** Keep your shoulder that is swinging the hammer lined up with the edge of the anvil, and draw out the clip using repetitive blows staying at the base of the clip.

**15.** When drawing the lateral clip, pay close attention and don't hit the collar of the stud hole with your cone hammer.



10



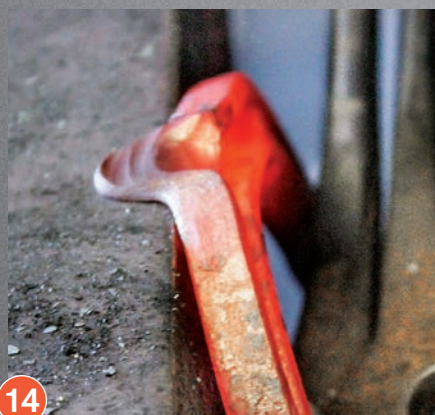
11



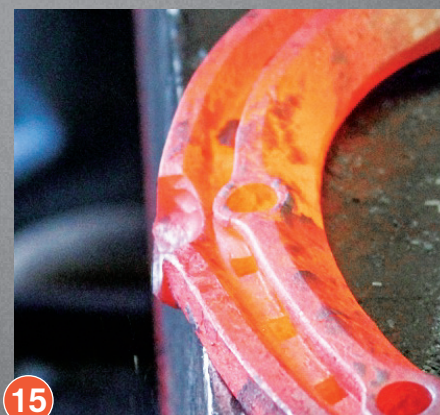
12



13



14



15

## THE JUDGING CRITERIA

Here are some of the shoe's aspects that we are going to focus on as judges, in order of importance:

- ◆ Size (match the measurements).
- ◆ Nail fit and stud fit.
- ◆ All forging elements are present in the shoe.
- ◆ Flatness of the shoe.
- ◆ Quality of clips.

## HOW TO ENTER

**Step 1:** Make the shoe as described by Craig Trnka.

**Step 2:** Obtain and complete the entry form at [AmericanFarriers.com/Summitshoe](http://AmericanFarriers.com/Summitshoe). If you are unable to download the form, contact *American Farriers Journal* at (262) 782-4480 to request a form to be sent in the mail.

**Step 3:** Send in the completed form and your shoe. If you won't attend the IHCS, mail this entry form and your concave shoe to *American Farriers Journal*, Summit Mail-In Forging Exercise, 16655 W. Wisconsin Ave., Brookfield, WI 53045.

Your entry must be received in the mail by Jan. 15, 2019.

If you are entering from outside the U.S., DO NOT assign a value to your shoe on the customs declaration form.

If you are attending the IHCS, drop off your entry form and concave shoe in the Duke Energy Center near the IHCS registration area by 5 p.m., Jan. 22, 2019.

**Step 4:** Each contestant will receive a free commemorative T-shirt. The top finisher will earn a belt buckle and 2020 IHCS registration.

T-shirts will be mailed by March 1, 2019, and immediately given to those submitting a shoe at the Summit. All shoes not picked up at the IHCS will not be returned.





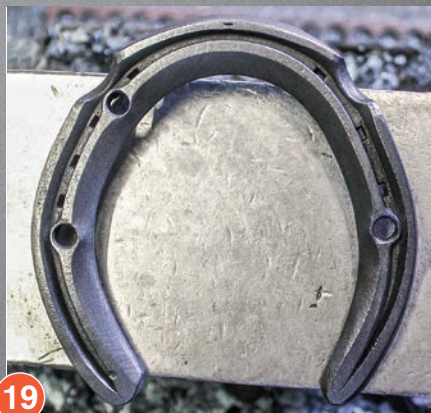
16



17



18



19

**16.** Another view of my warning of not hitting the collar with your hammer.

**17.** Thread the stud holes with a standard  $\frac{3}{8}$ -inch tap

**18.** Last of all, set the lead-edge of the concave to save the toe.

**19.** The shoe measure  $5\frac{5}{8}$ -inch wide by  $5\frac{3}{4}$ -inch long and  $2\frac{5}{8}$ -inch between the heels. Fit up with an E4 hybrid nail. Also check your tap threads.

Trusted therapeutic & performance solutions... **for over 20 years!**

#### SERIES I™

SPORT, WEDGE,  
XB (extra breakover),  
HIND, RACE



#### SERIES III™

UNIVERSAL  
GLUE-ON CUFF

#### FLEXX® with grABS™ Technology

A direct-glue solution for  
**performance or therapy.**

- 40% lighter than aluminum shoes
- Same dimensions as forged shoes
- 2X the wear of aluminum shoes

With abrasive **GRIT** for superior:  
**Grip • Traction • Wear**

With NEW **grABS™** for strongest bond  
**No surface prep • Fast • Reliable**

#### SERIOUS RELIEF for the Seriously Sore Hoof

**THERAPEUTIC BLACK™ OR PERFORMANCE BLUE™**

**BLACK™** rim pads deliver **superior shock reduction** and are unmatched for clinical and therapeutic applications.

**AVAILABLE IN:** Roller Motion, Sport, Wedge, Hind

#### FLEXX® AVAILABLE IN:

Sport (Front & Hind), Training Plates,  
Roller (Flat & Wedge), Therapy



**For those times when you need something other than nails.**

**(800) 801-2654 or (610) 347-0453**

**www.soundhorse.com | horseshoes@soundhorse.com**

