



G.E. Forge & Tool

959 Highland Way
Grover Beach, CA 93433

Phone: (805) 489-1111

Fax: (805) 489-5795

Email: info@geforg.com

Website: www.geforg.com

Contact

Josh Garner
joshua@geforg.com

Trade Names

GE-Forge & Tools



Three Generations of Tradition and Expertise

OUR HISTORY

In 1946, George Earnest set up a small shop in Klamath Falls, Oregon, to fill requests for custom-made horseshoeing tools. One farrier told another about nippers that cut better and lasted longer than any others, and the enter-prise grew.

The business has changed ownership and location several times since, but the tools that are named for George Earnest still make the shoer's work easier and hold up better under hard use than all the rest.



Beth Garner was the owner of G.E. Forge from 1973-1993.

PLEDGE TO EXCELLENCE

Our pledge to our customers is to continue this tradition of excellence, combining the craftsmanship of skilled hands with modern methods and machinery, to produce superior tools.

Since 1973, the Garner family has owned and operated G.E. Forge & Tool®. During this time, they have developed and produced many industry leading products. This tradition is continuing into its third generation with no end in sight. Our high-quality staff aims to give you the customer service and quality product you deserve.

UNCOMPROMISED QUALITY

Forged from proprietary steel alloy, our tools are made to withstand the rigorous, everyday work of professional farriers. The tools are made by G.E. professionals to ensure precision and consistency day after day.

WE'VE GOT IT DOWN, TRIED, & TRUE

G.E. Forge & Tool nippers combine durability with maximum wear resistance. The blades are aligned and sharpened by G.E. professionals, delivering a precision nip time after time. They are available in four sizes to suit the farrier's needs.



Josh Garner of G.E. Forge at the 2019 International Hoof-Care Summit trade show.

GE Forge & Tool Products

For More Information or to sign up for our mailing list, visit www.geforge.com



Flat, even nails every time

12" EZ Nail Cutter

The patent pending EZ Nail Cutter has overlapping blades that shear the nail close to the hoof wall leaving a flat top that does not have to be rasped. The Nail Cutter is designed to be placed directly on the hoof wall. This will give the perfect length cut every time and provide support for the tool to work correctly. On rung nails the Nail Cutter is designed to be used with the top, thin blade facing the farrier.



Best Nail Puller in the Business

12" EZ Crease Nail Puller

The EZ Crease Nail Puller is designed to lock over the nail head along its taper, easily removing the nail from a creased, swaged, or fullered shoe.

Superior Jaw Design

The design of the jaw enables it to pop up the nail, and lock onto the head with just a squeeze.

Rolled Head

The rolled head design allows for easy rollover once the jaws are locked onto the head, extracting the nail with one easy motion.



Conveniently Curved for Comfort

12" Low Nail Curved Jaw

Providing the same smooth, effortless clinch, the Low Nail Curved Jaw is ideal for the smaller sized nails. This tool is a racehorse platers dream for clinching race nails.

Lightweight

Weighing in at just over a pound, this 12" version of the Curved Jaw Clincher is light and easy to handle.



Conveniently Curved for Comfort

14" Curved Jaw Clincher

The Curved Jaw Clincher has comfortable handles and overall balance. You'll enjoy the tools trademarked comfort and relentless clinch time after time, horse after horse.

Perfect Jaw Angle

The angle of the jaws allow for a secure bite, and provide a perfect clinch with just a squeeze.

Dual Heat Treated

Our Curved Jaw Clinchers are put through a dual heat treat process to ensure longer teeth and rivet life.

GE Forge & Tool *Products*

For More Information or to sign up for our mailing list, visit www.geforge.com

Quality You Can Count On

EZ Nipper™

G.E. Forge & Tool's Hoof Nippers combine durability with maximum wear resistance. The blades are aligned and sharpened by G.E. professionals, delivering a precision nip time after time. They are available in four sizes to suit each farrier's needs.

Available in: 12", RT14", 14" and 15"

Ergonomic Handle

The EZ Nipper™ handles have a flat, oval shape, which eliminates sharp edges. This design provides more comfort, and reduces hand fatigue.

Increased Leverage

With slightly more leverage than the Classic Nippers™, the EZ Nipper™ decreases the effort needed in the hoof trimming process.

The Original

Classic Nipper™

G.E. Forge & Tool's Hoof Nippers combine durability with maximum wear resistance. The blades are aligned and sharpened by G.E. professionals, delivering a precision nip time after time. They are available in four sizes to suit each farrier's needs.

Available in: RT14", 14" and 15"

Thicker Cut

The Classic Nipper™ has a slightly deeper throat than the EZ Nipper™. This allows for thicker cuts when necessary.

True to Design

The Classic Nipper™ has withstood the test of time, proving its design among many farriers of the world.

A Design For The Ages

12" Half Round Nipper

The Half Round, while originally designed for clip placement, is excellent for those "hard to get at" places on the hoof. Utilizing a rounded head, it easily works its way around the hoof.

The Perfect Arc

The G.E. Half Round design allows you to make your cut based on the size of your clip.

Ergonomic Handle

Introducing the NEW

Classic Pull Off

The G.E. NEW Classic Pull Off has a flat top with thick, sturdy blades. The one-inch blade width, in combination with the cam roll, provides for an easier breakover. The patent-pending "C" grooves allow you to spread most shoes even and flat with little effort.

Available in: 12" and 14"

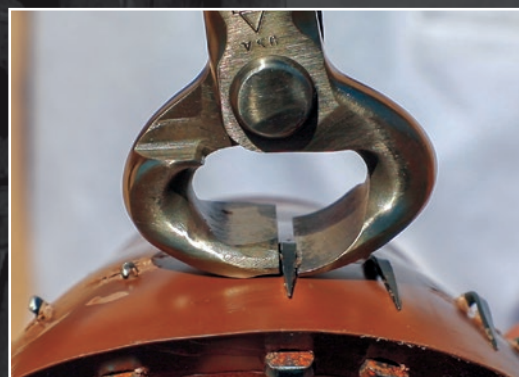
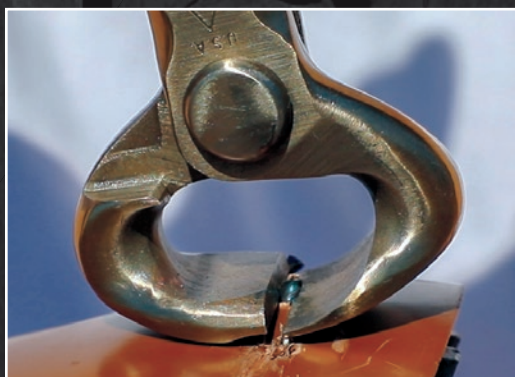


UNCOMPROMISED QUALITY

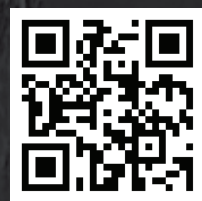
INNOVATING SINCE 1946 - WE'VE GOT IT DOWN, TRIED, & TRUE

INTRODUCING THE NEW GE EZ NAIL CUTTER

The patent pending **G.E. EZ Nail Cutter** has overlapping blades that shear the nail close to the hoof wall leaving a flat top that does not have to be rasped. Blades parallel to the horseshoe work best on rung nails. Blades perpendicular to the horseshoe work best on folded nails.



Scan to watch the
Nail Cutter in action



Forged from proprietary steel alloy, our tools are made to withstand the rigorous, everyday work of professional farriers. The tools are made by G.E. professionals to ensure precision and consistency day after day.

GE
FORGE & TOOL
SINCE 1946

www.geforge.com

ALWAYS BUILT BY HAND
— IN —
CALIFORNIA, U.S.A.